

Uniclass L682	EPIC E61
CI/SIB	W



# Dry Lining Paint

The professional solution for a flawless finish

- Hides imperfections highlighted by critical lighting
- Removes the need for a primer
- Easy to touch up
- Consistency of finish
- Touch dry time of 1-2 hours



**NEW  
PRODUCT**

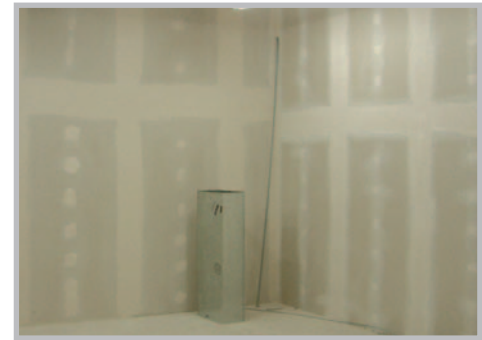
Excellence  
in paint  
since **1890**

# Dry Lining Paint - The professional solution for a flawless finish

## Dry Lining Systems

Dry lining/dry walling replaces the conventional building practice of plastering by applying plasterboards to timber, metal frames or directly to internal blockwork.

The UK and Ireland dry lining market is growing at 5% each year; more than 300 million square meters of plasterboard has been installed in 2008. Dry lining systems are fast, economical to install and reduce water consumption on site.



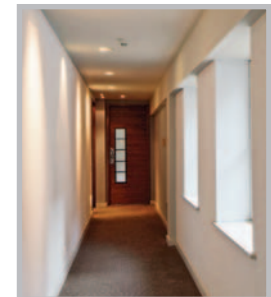
## Johnstone's Dry Lining Paint

Johnstone's has engaged industry experts to develop a Dry Lining paint that can be applied directly to dry lining once the boards are fastened and filling processes are complete.

Its unique application qualities allow the product to flow evenly and smoothly onto the plaster board, creating a uniform finish on all board types and jointing compounds.

The dead matt finish significantly reduces imperfections in areas featuring directional and natural critical lighting conditions, such as spot lighting and large expanses of glass, creating the perfect flawless finish.

Active and dynamic construction sites can often result in damaged and marked boards. Johnstone's Dry Lining paint can be applied to damaged boards requiring touch up, blending naturally into the existing finish, and its enhanced opacity will hide any unwanted surface markings.



### Application

Johnstone's Dry Lining paint can be applied by brush, roller or spray directly onto new (without the need to apply a primer) or primed dry lining boards.



Application is made quick and easy through improved roller flow and with a touch dry time of within 1-2 hours painted areas are re-useable rapidly, providing an effective solution for today's construction environment.

To achieve the optimum finish on new dry lining it is advised to apply a first coat of Johnstone's Dry Lining paint thinned 10% with clean water, followed by one or more full coats applied by roller. For primed surfaces apply 1 or more full coats.

<b>Product Data</b>	<b>Johnstone's Dry Lining Paint</b>
<b>Colour</b>	Brilliant White
<b>Finish</b>	Dead Flat Matt
<b>Sizes</b>	10L
<b>Coverage</b>	12-14 sq metres/ litre
<b>Touch Dry</b>	1-2 Hours
<b>Recoatable</b>	2-4 Hours

Find out more at: [www.johnstonestrade.com](http://www.johnstonestrade.com)

